

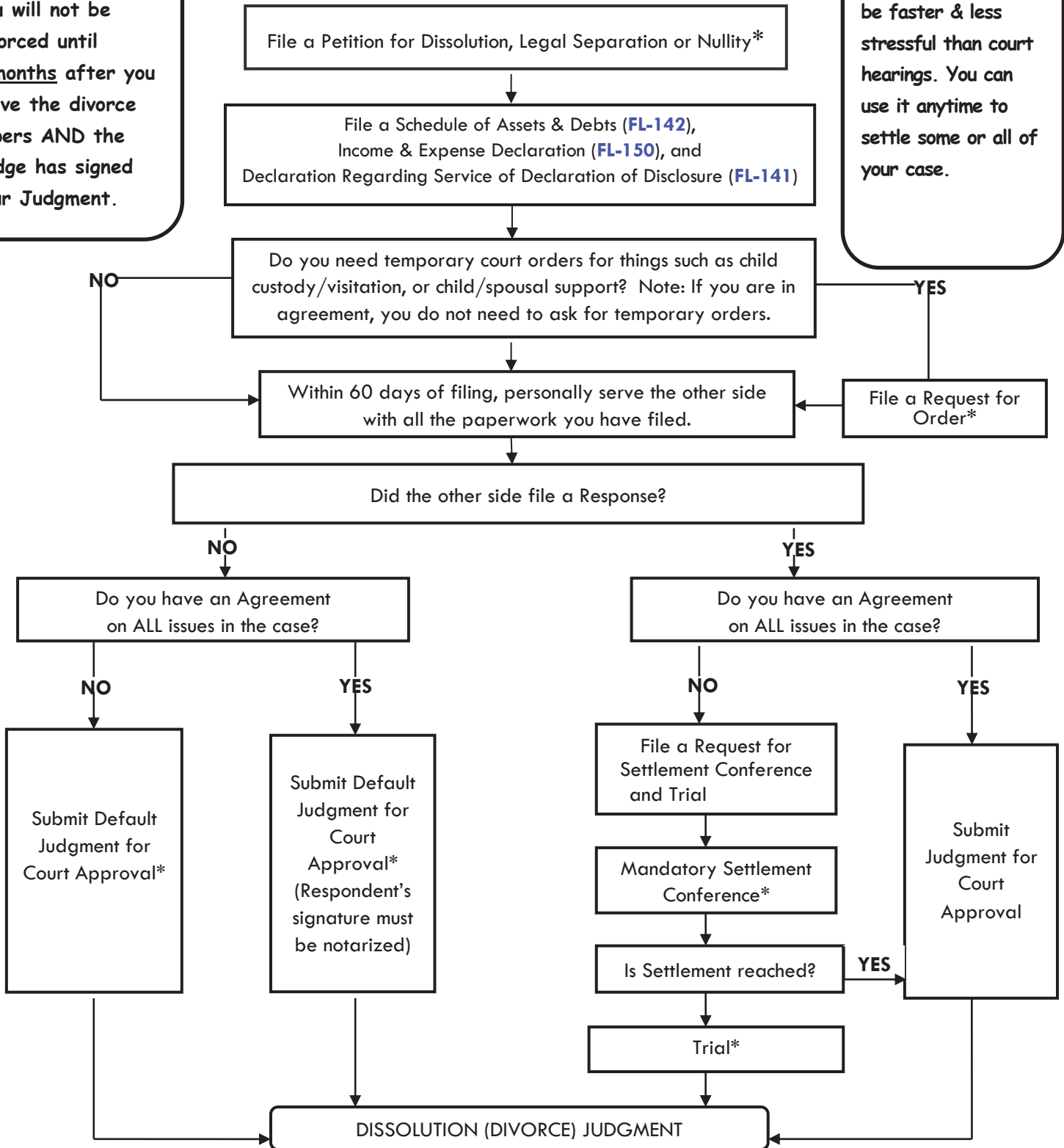
DIVORCE CASE FLOW CHART

(Dissolution, Legal Separation and Nullity)

NOTE:

You will not be divorced until **6 months** after you serve the divorce papers AND the Judge has signed your Judgment.

Private Mediation can be faster & less stressful than court hearings. You can use it anytime to settle some or all of your case.



This chart shows the basic outline of a divorce case. Please consult with an attorney for legal advice concerning your individual case.